

42

STAR TREK™

THE OFFICIAL STARSHIPS COLLECTION



U.S.S. PASTEUR
NCC-58925

OLYMPIC CLASS

LAUNCHED: 24th C

LENGTH: 320 METERS

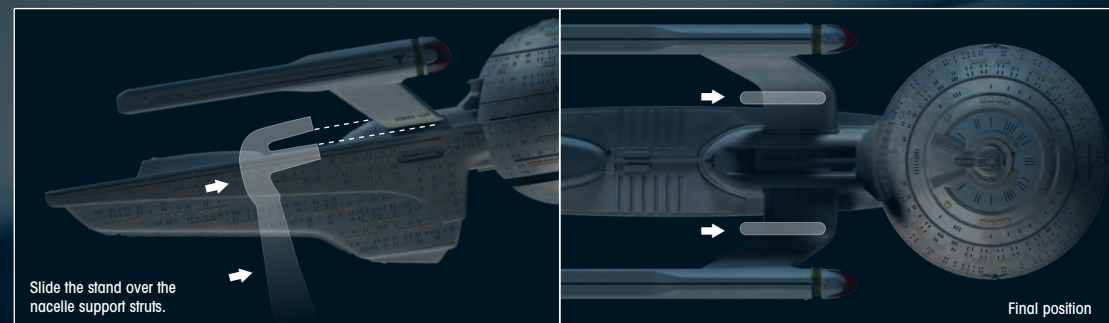
MAX SPEED: WARP 13

U.S.S. PASTEUR
NCC-58925

Contents

- P.04: *U.S.S. PASTEUR NCC-58925*
- P.10: *THE NEXT GENERATION: THE SEVENTH SEASON*
- P.16: *DESIGNING THE SHIP*
- P.18: *ON SCREEN*

Stand assembly:



ORDER ONLINE

Order binders, missing issues or other Eaglemoss products at:
www.mycollectionshop.com

www.mycollectionshop.com

EAGLEMOSS COLLECTIONS

Eaglemoss Publications Ltd. 2015
1st Floor, Kensington Village, Avonmore Road,
W14 8TS, London, UK. All rights reserved.

™ & © 2015 CBS Studios Inc. STAR TREK and related marks and logos are trademarks of CBS Studios Inc. All Rights Reserved.

Development Director:
Maggie Calmels

STAR TREK – The Official Starships Collection is published fortnightly.

DON'T MISS AN ISSUE: place a regular order with your magazine retailer.

SUBSCRIBE and receive exclusive free gifts – www.startrek-starships.com
Call 0344 493 6091
Post the subscription form included with issues 1 to 5

BACK ISSUES
To order back issues: Order online at www.startrek-starships.com or call 0344 493 6091

UK distributor: COMAG Magazine Marketing

Find us on Facebook
Join us online for competitions, updates and more!

CUSTOMER SERVICES:
www.startrek-starships.com

UK: 0344 493 6091
startrek-ship@eaglemoss-service.com

Australia: (03) 9872 4000
bissett@bissettmags.com.au

New Zealand: (09) 308 2871
Fax: (09) 302 7661
subs@ndc.co.nz

South Africa: (011) 265 4307
service@jacklin.co.za

Malaysia: (03) 8020 7112
sales@allscript.com

Singapore: (65) 6287 7090
sales@allscript.com

OVERSEAS BACK ISSUES
Place your order with your local magazine retailer.

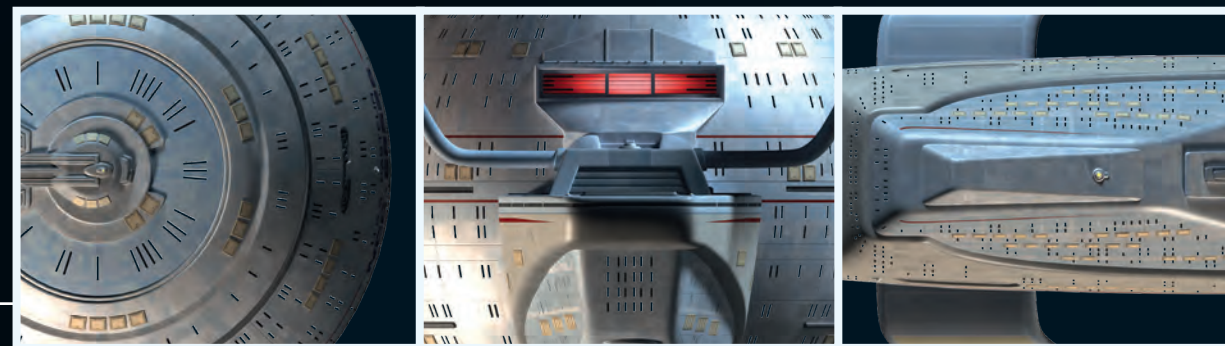
Recommended age 14+.
Warning! Collectable figurines.
Not designed or intended for play by children.
Do not dispose of in domestic waste.

U.S.S. PASTEUR NCC-58925

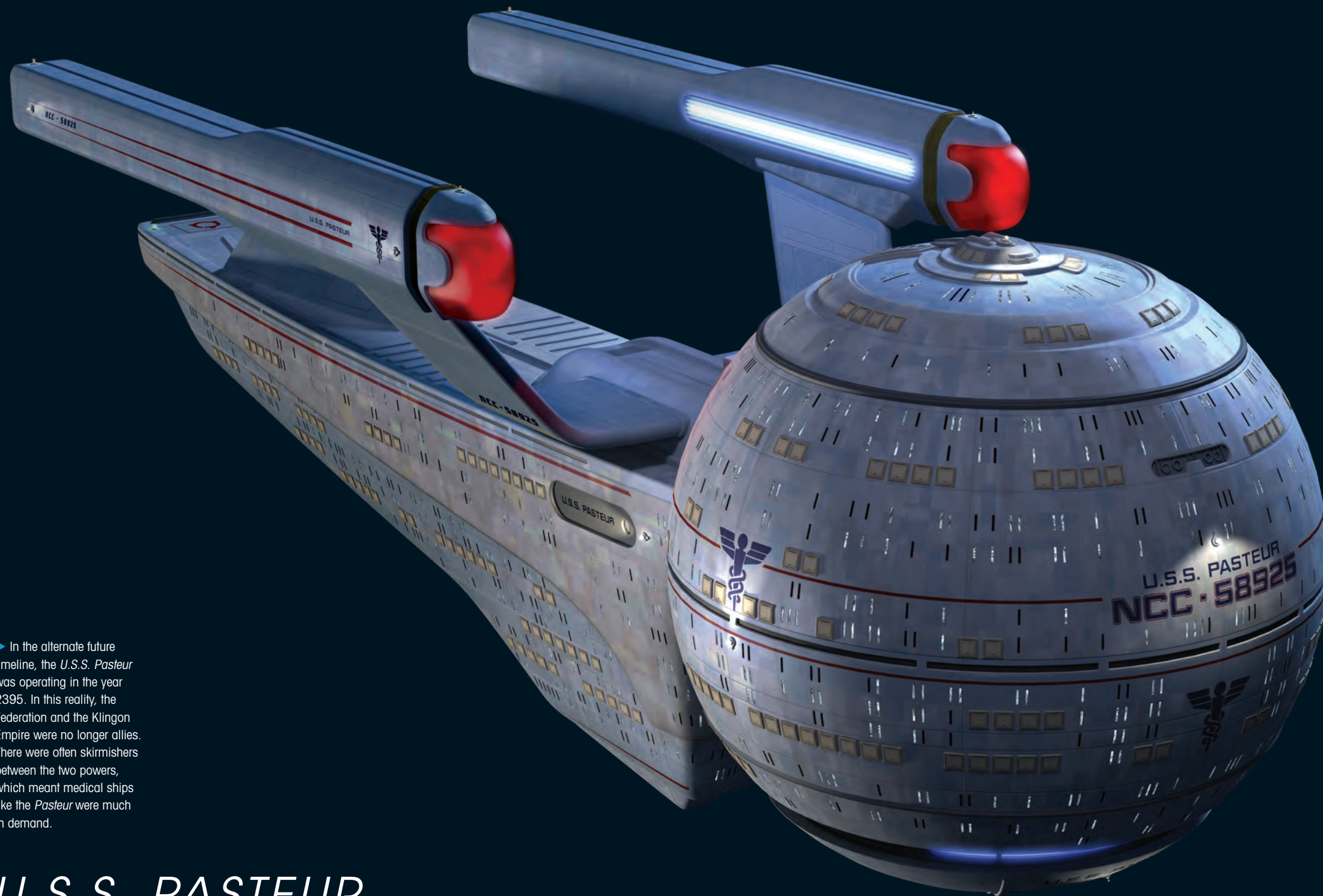
SPECIFICATION



REGISTRY:	NCC-58925
CLASS:	OLYMPIC
CONSTRUCTED:	MARIN COUNTY STARFLEET YARDS
TYPE:	HOSPITAL SHIP
LAUNCHED:	24TH CENTURY
DESTROYED:	2395
LENGTH:	320 METERS
TOP SPEED:	WARP 13
WEAPONRY:	PHASERS
CAPTAIN:	BEVERLY PICARD



www.startrek-starships.com



► In the alternate future timeline, the *U.S.S. Pasteur* was operating in the year 2395. In this reality, the Federation and the Klingon Empire were no longer allies. There were often skirmishes between the two powers, which meant medical ships like the *Pasteur* were much in demand.

U.S.S. PASTEUR NCC-58925

In an alternate future, the *U.S.S. Pasteur* NCC-58925 was a medical ship commanded by Dr. Beverly Picard.

The *U.S.S. Pasteur* NCC-58925 was an *Olympic*-class ship that existed in an alternate future timeline. It had an unusual design in that it featured a spherical primary hull, although its engineering hull and warp nacelles were of a more conventional shape, similar to those found on Starfleet ships in the normal timeline.

The *Pasteur*'s other distinctive features included a deflector strip, rather than a deflector dish, and a shuttlebay located in a large structure on top of the flat secondary hull.

The *Pasteur* was a purpose built hospital ship and featured the caduceus, the ancient symbol of the medical profession, prominently displayed on its hull in several places, clearly indicating its status as a medical ship. As such, it was designed to deal with medical emergencies rather than exploration or combat missions, and it had several transporter rooms to cope with emergency evacuations, as well as numerous sickbays.

LIMITED TACTICAL ABILITIES

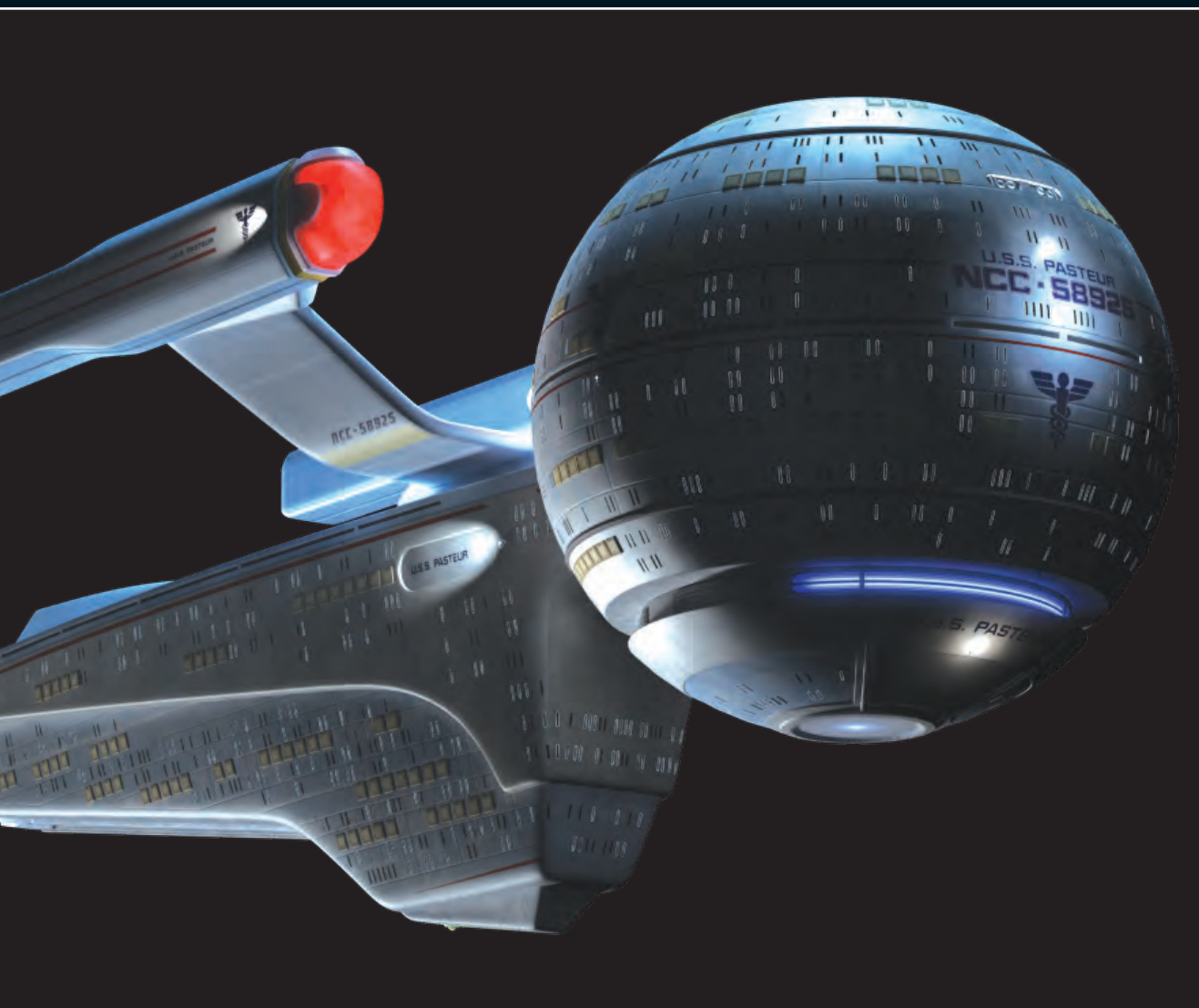
The *Pasteur*'s defenses were minimal, and unlike most Starfleet vessels in this alternate timeline, it was not fitted with a cloaking device; also its sensor sweeping range was limited to one light-year. The ship could, however, travel as fast as warp 13, meaning that in this timeline warp speeds had once again been redefined.

The interior design was simple and sparse. On the bridge, the caduceus appeared on the front of the control console pedestals. Just off the bridge was Captain Beverly Picard's ready room, which also doubled as a place for staff meetings.

In the alternate future, Dr. Beverly Picard agreed to take Jean-Luc Picard to the Devron system aboard the *Pasteur* after he became convinced that there was a spatial anomaly there that



◀ The *Pasteur* was under the command of Captain Beverly Picard, who in this timeline was the ex-wife of Jean-Luc Picard. It was clear that the pair had divorced some years prior, but there was still a great deal of affection between the couple and she agreed to help him find the spatial anomaly he was looking for, despite the potential danger.



◀ Despite its status as a medical ship, the Klingons attacked the *Pasteur* after it crossed their borders. The *Pasteur* had limited weaponry, and very few defensive systems, making it an easy target for the much more powerful Klingon attack cruisers.

▶ In the future Q showed Jean-Luc Picard the *Pasteur* was destroyed by the Klingons, but the senior staff beamed to safety on the *Enterprise-D*.



◀ Ensign Nell Chilton was the flight controller on board the *Pasteur*. She was killed when the ship came under attack from the Klingons.

▶ The *Pasteur* was essentially a traveling hospital, and was ideally suited to that task, but it lacked some of the sensor and tactical abilities of other ships.



▲ *Olympic-class* vessels, such as the *Pasteur*, were easily identifiable by their spherical primary hull. The majority of the interior was given over to sickbays and medical labs, meaning they were equipped to deal with widespread casualties.

threatened the very existence of the universe. In the normal timeline, this star system was in the Romulan Neutral Zone, but in the alternate future the Klingons had taken over the Romulan Star Empire. Consequently, this region of space had now become a no-go area for Federation ships, as the Klingons had closed their borders.

The exception to this rule was that medical ships had been granted permission to cross the border to help the Romulans fight off an outbreak of the Terrellian plague. Dr. Picard was far from convinced that her ex-husband was correct about the existence of the spatial anomaly because he was suffering from Irumodic Syndrome, a rare neurological condition similar to Alzheimer's disease. She nevertheless agreed to take him, even though she believed that entering Klingon territory was "insane." Once they were given clearance to cross the border by Worf, who insisted

on going with them, Beverly ordered the ship to proceed to the Devron system at warp 13.

This mission was particularly dangerous for a ship such as the *Pasteur*, as it was only lightly armed with phasers and did not appear to carry photon torpedoes. In addition, its shields were not particularly strong and Beverly Picard knew that they would not last long in a fight if they encountered any Klingon ships. She made it perfectly clear to her ex-husband that they would immediately return to Federation space if they encountered any serious opposition.

Once the *Pasteur* reached the Devron system, a full sensor sweep out to one light year of their location was initiated, but it did not detect any temporal anomalies. At this point, Worf, who had been monitoring Klingon communication channels, heard that several warships had been dispatched to search for a "renegade Federation vessel."

Beverly wanted to leave before the Klingon ships arrived. But Jean-Luc persuaded her to stay a little longer while Data modified the main deflector to increase the limited sensor equipment of the *Pasteur* so it could scan beyond the subspace barrier.

UNDER ATTACK

Unfortunately, before they could complete the sensor sweep, two Klingon attack cruisers decloaked and attacked the *Pasteur*. In the first volley of disruptor fire, the *Pasteur's* shield strength was nearly halved and warp power was knocked offline. The *Pasteur's* phasers were not powerful enough to penetrate the Klingon ships' shields, and in the following wave of attacks the *Pasteur's* shields collapsed, while helm officer Nell Chilton was killed when her console exploded. It looked as if the entire crew would suffer the same fate

until the *U.S.S. Enterprise* NCC-1701-D suddenly arrived and launched a furious volley of phaser fire and torpedoes that destroyed one Klingon ship and forced the other to retreat. This gave them just enough time to beam the crew of the *Pasteur* aboard before the medical ship's warp core breached, blowing it to smithereens.

▲ Dr. Beverly Picard was delighted to welcome Geordi La Forge and Data aboard her ship. They had all agreed to take Jean-Luc Picard to the Devron system to search for a spatial anomaly.



DATA FEED

In the alternate future, Worf was no longer on the Klingon High Council as the house of Mogh had been forced from power. Instead, he was now governor of H'atoria, a small Klingon colony near the border with the Federation. Although this position was largely ceremonial, Worf still had enough influence to grant permission for the *Pasteur* to enter Klingon territory. Also in this future, Will Riker had become an admiral and had chosen the refitted *U.S.S. Enterprise* NCC-1701-D as his flagship.

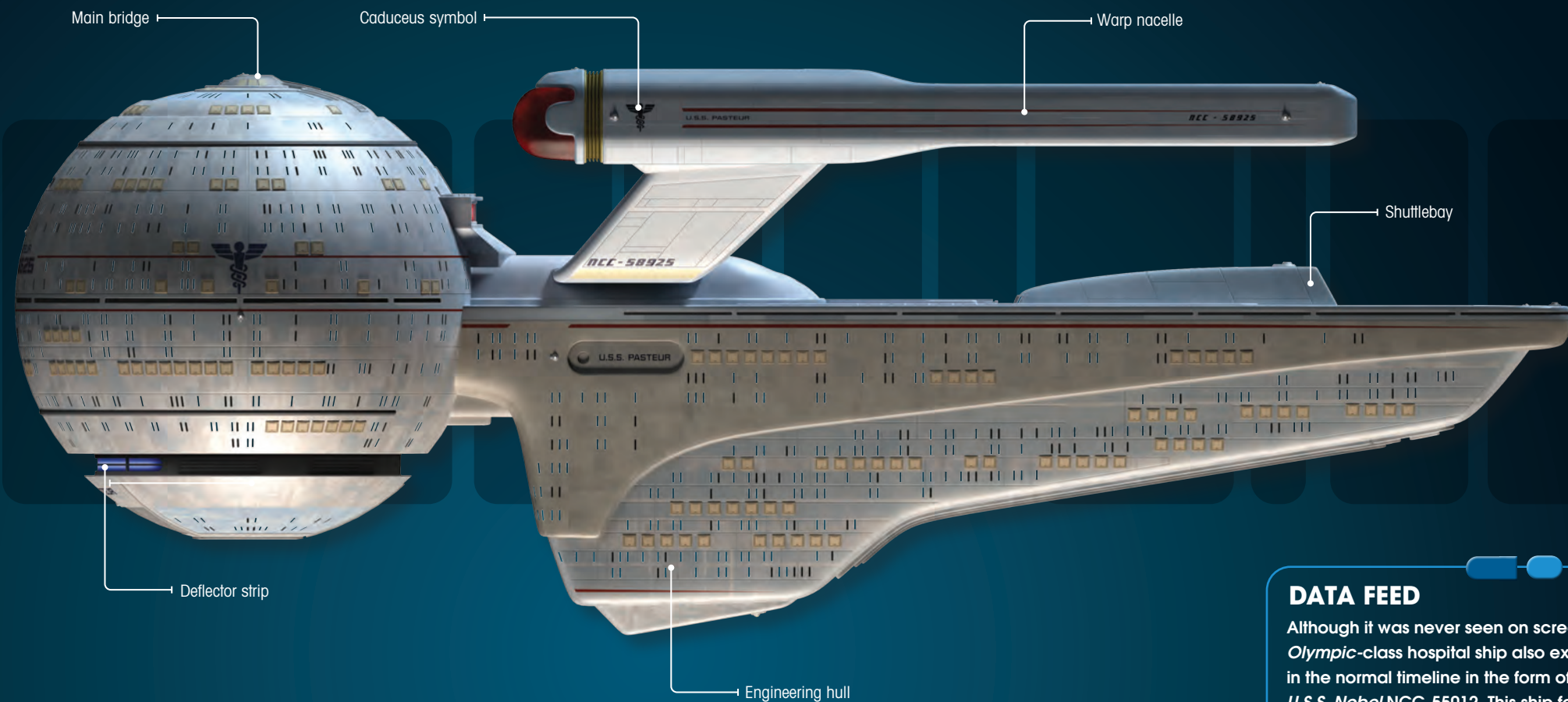
INTERNAL CONFIGURATION

The bridge of the *U.S.S. Pasteur* NCC-58925 was much more compact than those found on other Starfleet vessels. Nevertheless, it conformed to a similar configuration with the captain's chair in the middle, surrounded by other work consoles, such as the science station, built into the walls of the room. The flight controller sat alone at a large semi-circular work station at the front of the bridge.

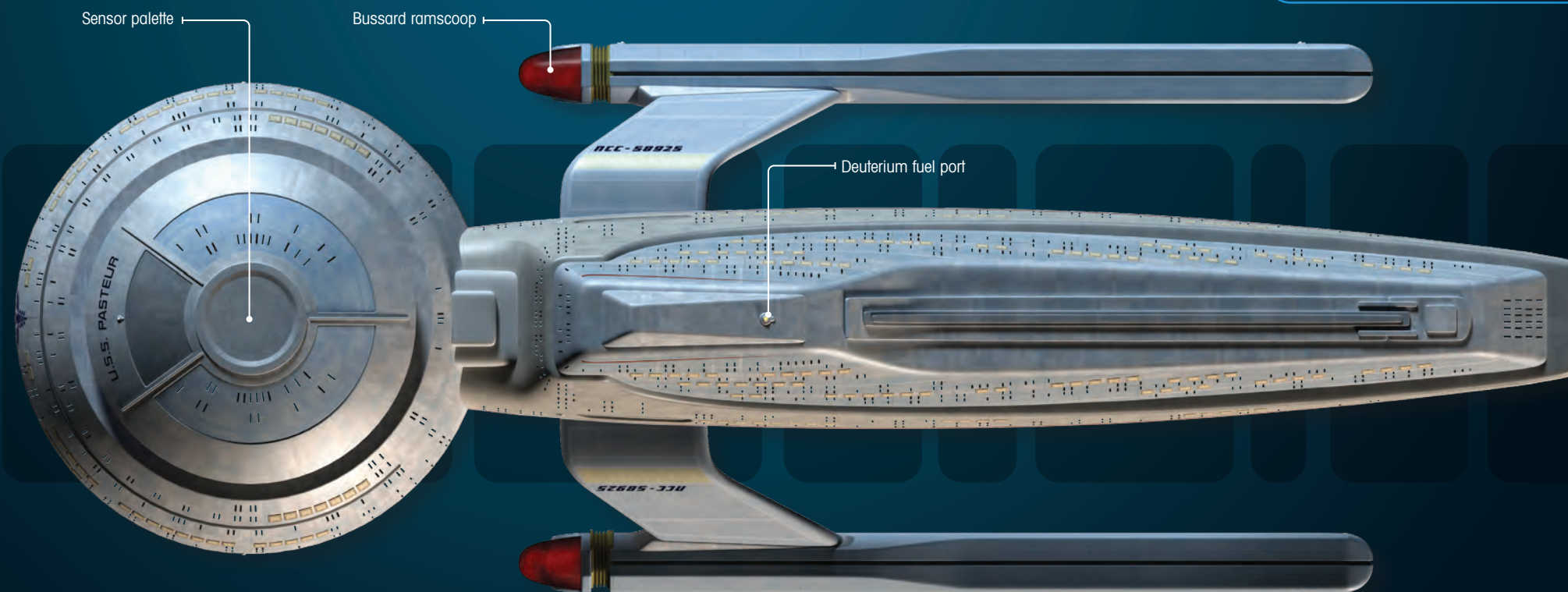
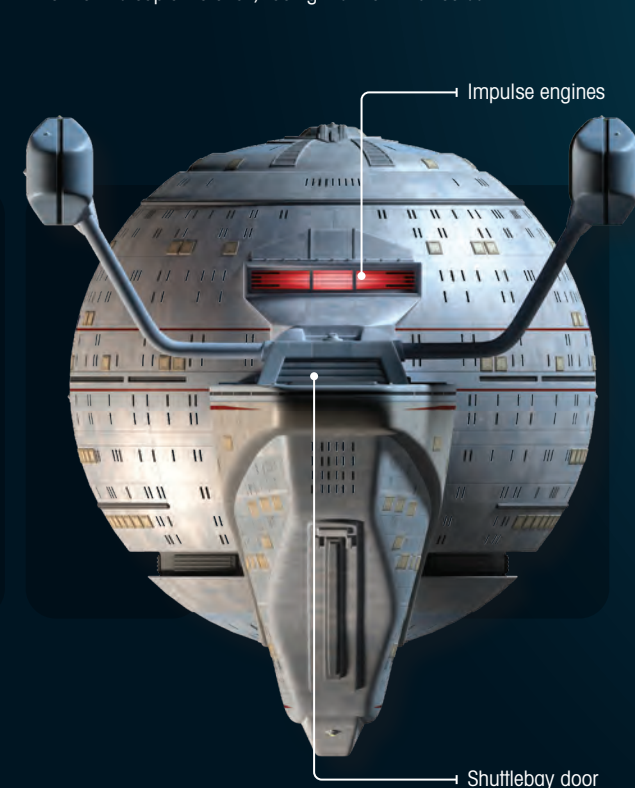
In addition to sickbays and medical labs, the internal layout of the *Pasteur* featured at least two transporter rooms, which could be used for emergency evacuations, and crew quarters located on deck 5.



▲ Most of the *Pasteur's* main flight and operational controls could be operated by the large semi-circular console that was positioned in front of the captain's chair, facing the main viewscreen.

**DATA FEED**

Although it was never seen on screen, the *Olympic*-class hospital ship also existed in the normal timeline in the form of the *U.S.S. Nobel* NCC-55012. This ship fought in the Dominion War, and in 2374 it reported numerous casualties to Starfleet Command.

**SPHERICAL HULL**

Besides the *Olympic* class, the only other Starfleet vessels known to have a spherical primary hull were the *Daedalus*-class starships in service in the latter half of the 22nd century.

CONSTRUCTION

According to the ship's dedication plaque found on the bridge, the *Pasteur* was constructed by the Skywalker Division at the Marin County Starfleet Yards in the San Francisco Bay Area on Earth.

SPECIAL DISPENSATION

In the alternate future, medical ships such as the *Pasteur* were among the few Federation vessels allowed by the Klingons to cross their border in order to treat Romulans who were suffering from the Terrellian plague.



THE NEXT GENERATION

▲ Audiences had become enthralled by the adventures of Captain Picard and his crew, and the writers were keen to explore story threads that fans had always wanted to see before its TV run ended.

SEVENTH SEASON

STAR TREK: THE NEXT GENERATION's final season proved as popular as ever, and included a rousing finale in which Picard saved the universe.

Everyone knew that *STAR TREK: THE NEXT GENERATION's* seventh season would be its last. Following the final original series movie, it was deemed the perfect time to take Picard and his crew to the big screen, and work on the first *TNG* feature was scheduled to begin as soon as filming on the television series wrapped.

In order to accommodate the schedule for *STAR TREK GENERATIONS*, work on *TNG's* final season started early, cutting the hiatus short by a month. Having only a short break was tough, and everyone involved in *TNG* had to fight fatigue as



◀ It was revealed in the final season that Dr. Crusher was a fully-qualified bridge officer. She took command of the *Enterprise-D* in the episode 'Descent, Part II' when it was attacked by the Borg.



◀ Counselor Troi was given a storyline in 'Thine Own Self' in which she sought the advice of Commander Riker and Dr. Crusher about becoming a bridge command officer.



◀ The writers made a conscious effort in the final season to give the female characters more to do by placing them at the center of action-oriented storylines.



▲ The episode 'Interface' explored Geordi La Forge's family background and revealed that his mother, Silva La Forge, was captain of the *U.S.S. Hera* when it was lost without a trace.

their final season drew to a close. Few people were busier than writers Ronald D. Moore and Brannon Braga, who were given the job of writing the *TNG* movie when executive producer Michael Piller passed on the opportunity.

By now the writing was firmly under executive producer Jeri Taylor's guidance and Michael Piller had scaled his involvement right back to concentrate his efforts on *STAR TREK: DEEP SPACE NINE*. Under Taylor's influence, the writers had been making a definite effort to strengthen the female characters, and this continued as the series drew to a close.

STRONG WOMEN

Dr. Beverly Crusher was shown to be an extremely capable commanding officer in 'Descent, Part II' and the writers wanted to establish that Troi was now pursuing command training. "Troi had evolved," Moore said. "She was doing less and less of the empathic stuff and had become more of a therapist and psychologist, but even that was not enough for every episode. The idea of making her a bridge officer was something that was germinating over time, beginning with the episode

'Disaster' when you learned that she hadn't gone to Starfleet Academy and taken those courses. In one of her novels Jeri (Taylor) wrote about Troi coming away from a command experience with a taste of blood; it had excited her on some level and she wanted to embrace it."

THE HOME STRETCH

The knowledge that there were only 26 episodes of *TNG* left affected the kind of stories the writing staff chose to tell, and in the course of the year there was a concerted effort to wrap up old plot threads. The seventh season finally introduced us to Geordi's parents and Worf's brother, and saw the return (and departure) of both Wesley Crusher and Ro Laren.

Although many of the stories dealt with issues that fans had been dying to see tackled, and the final year's ratings were spectacular, Moore felt that this approach weakened the season. "We spent too much time thinking things like, 'This is the last season and we still haven't seen Geordi's mother,' instead of pushing our ideas of storytelling as we had done in the sixth season; there was this sense of fatigue and 'Let's do one last Riker show.'



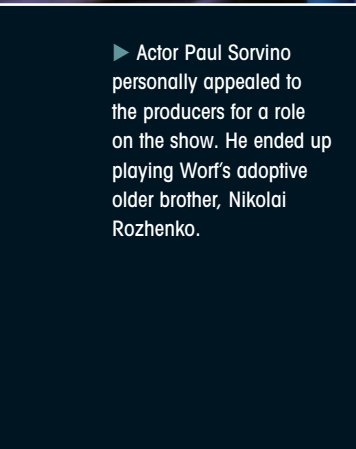
◀ The suppressed romantic feelings that Picard and Crusher had for each other were brought to the surface when they were telepathically linked during 'Attached.'

▶ 'Lower Decks' explored a side of life on board the *Enterprise-D* that had not been seen before by putting several junior officers at the center of the story.



▶ Robin Curtis, who had previously played Saavik in *STAR TREK III: THE SEARCH FOR SPOCK*, took on the part of a Romulan, Tallera, in 'Gambit, Part I & Part II.'

◀ Michelle Forbes reprised her role as Ro Laren in 'Preemptive Strike.' The character ended up leaving Starfleet to join the Maquis rebels.



▶ Actor Paul Sorvino personally appealed to the producers for a role on the show. He ended up playing Worf's adoptive older brother, Nikolai Rozhenko.



from a pitch by Nick Sagan, who would later spend some time as a staff writer on *STAR TREK: VOYAGER*. By linking Picard and Beverly telepathically it forced them to confront their buried feelings for one another. Piller urged the writing staff to use the remaining episodes to look at other unanswered questions in *TNG*'s history.

'Preemptive Strike' saw Michelle Forbes return as Ro Laren when she was sent undercover to infiltrate the Maquis, eventually deciding to side with them against Starfleet.

GUEST STARS

Michelle Forbes wasn't the year's only significant guest star. Robin Curtis, who played Saavik in *STAR TREK: THE SEARCH FOR SPOCK*, played another Vulcan in 'Gambit.' Dwight Schultz brought Reg Barclay back in 'Genesis,' and a very young Kirsten Dunst played Hedril in 'Dark Page.' Paul Sorvino (famous for several movie roles, including Paul Cicero in 'Goodfellas') was cast as Worf's brother Nikolai after he visited the producers and asked to make an appearance on the show.

Inevitably, there were some stories the writers didn't get to. They seriously discussed Troi marrying Riker, or possibly his transporter double Tom, but instead they decided to have Worf and Troi pursue a romance. Story editor Naren Shankar worked on a Chekov story, and Moore wanted to tell a story about the *Enterprise-D* visiting Sigma Iotia II and discovering that the Iotians were now imitating Kirk,

Spock, and McCoy rather than 1920s gangsters. There were still too many stories and not enough time. And, as the series marched on, it became increasingly important to begin work on the two-hour season finale.

END OF AN ERA

Although Piller wasn't deeply involved with most of the last season, he remembered that he wanted to contribute to the last episode. "It was particularly important to me because I knew that the *STAR TREK* movie was coming out soon, and I had not been involved in that," said Piller. "The finale was going to be my *NEXT GENERATION* legacy."

However, although Piller was determined that the last episode would be good, he freely admitted that it was difficult to come up with a suitable plot. The story that developed had its origins in several different pitches that Piller decided to combine. Braga had pitched an idea about a character who was travelling between different time periods, and this was combined with an idea of Moore's that featured Q. "I pitched a memo about a Q show," Moore remembered. "The universe suddenly fractured, and there were all these bizarre things happening. You were on a New York street and there were knights in armor walking around. The key thing was that, sitting off in an alleyway, was this homeless person who was Q, and he was saying, 'I used to be an omnipotent being.' Q's gone insane. Michael didn't really



◀ Fan favorite Reg Barclay returned in 'Genesis,' where a treatment for the Urodalan flu activated one of his recessive genes and caused him to mutate into a spider-like creature.



◀ A young Kirsten Dunst appeared as Hedril, a member of a telepathic species. She unintentionally caused Lwaxana Troi to lapse into a coma after stirring up repressed memories of her daughter, Kestra, who had died in childhood.



◀ Writer Ron Moore wanted to revisit the lotians, who had been found imitating 1920s gangsters in *THE ORIGINAL SERIES*. Moore's idea was that the lotians would now be found to be imitating Kirk and his crew.

▶ The final episode went right back to the beginning and showed Picard on board a shuttlecraft being flown by Tasha Yar to his new assignment as captain of the *Enterprise-D*.



▶ It was decided that the final episode of *THE NEXT GENERATION* should return to its beginnings and feature Q. He would reveal that humanity was still on trial and had to prove themselves worthy of continued existence.



buy it, but he did pick up on it and say we should bookend the series with a Q show."

VITAL MESSAGE

Moore and Braga had only a matter of days to write the script, and Braga described the experience as "very much a blur." When they submitted the first draft, Piller recalled that he had some concerns. "Ron and Brannon wrote this great first hour," said Piller, "but the second hour went nowhere, in my opinion, so I forced everybody back to reconceive what we were trying to do."

Piller insisted that they needed to focus on the nature of the threat posed by Q and on expressing a Roddenberryesque message. "I very much wanted this last episode to reflect my dedication to what I think is Roddenberry's vision," said Piller. "I was always looking for what the show was about. How does it go beyond the action? Ultimately, I got the inspiration for the goal while I was in yoga class. In the middle of my moving meditation I called Jeri and said, 'I've got it! It is the cooperation between our past selves, present selves, and future selves. We must learn to bring ourselves together in unison in order to solve the problem that we are facing in life.' As human beings we are divided into so many different versions of ourselves. Who we were as kids has to be reconciled psychologically with who we are



Picard got an insight into a possible future in 'All Good Things...', where he was suffering from a degenerative brain disease and living on his family's vineyard following his divorce from Beverly Crusher.

today and who we are going to be tomorrow. Because we were doing time travel, we could show that literally by using Picard."

LOST SCENES

Piller's decision resulted in a major rewrite of the second part of the script. While they are both very proud of 'All Good Things...', Moore and Braga were sad that parts of their original draft were lost. "We had a great sequence where Riker and the gang break Picard's *Enterprise* out of mothballs in an old shipyard," Braga remembered. "We thought it was a romp," Moore added. "It was so much fun, going on the bridge of the *Enterprise* with the little velvet ropes surrounding it, and placards saying Geordi La Forge sat here one day! We thought it was great, but Michael disagreed and said, 'You need jeopardy; more mystery.'"

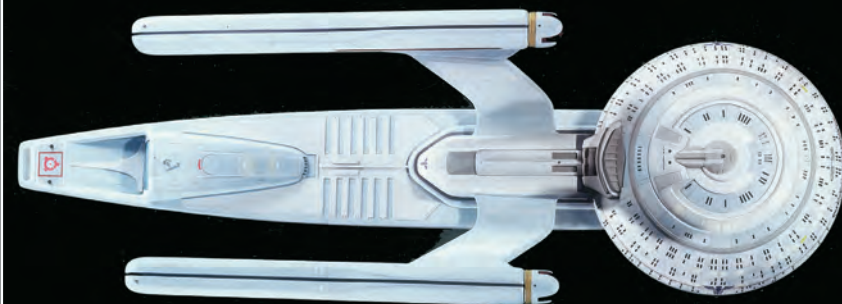
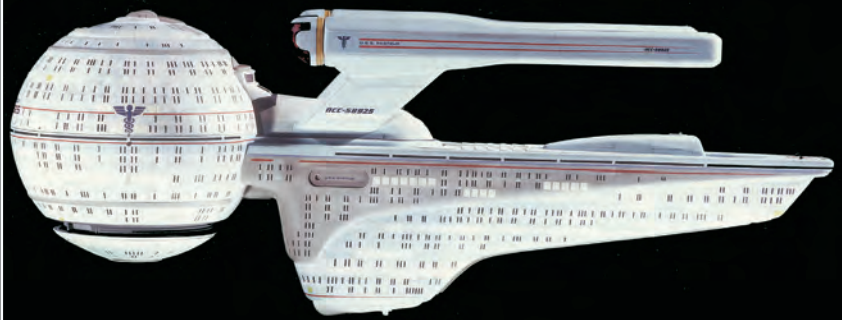
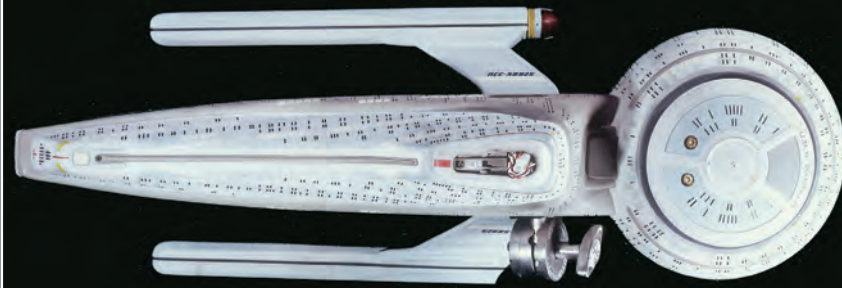
Even though 'All Good Things...' was written under enormous time pressures, it provided a perfect ending to *TNG*'s seven years on television. The very last scene stands out as one of the most affecting moments in the show's history. After all his experiences, for the first time ever Picard joins the senior staff for their poker game. "The heart and soul of that show was Captain Picard," Braga said, "and it's Picard who's sitting at that poker table at the end, and it's his emotional experience in that scene that brings a tear to your eye."

'All Good Things...' was the most watched episode of *TNG* ever, and set new highs for syndicated television. It was so successful that it even beat network shows in several territories. Summing up the series' achievements is almost impossible. When the idea for a new *STAR TREK* series was first mooted few people believed that it could work, but *TNG* changed the face of television. It was the most successful syndicated drama ever; it rejuvenated interest in science fiction, spawning countless imitators; and it established *STAR TREK* as a television powerhouse that continued very successfully for years.

Braga added that the show had a groundbreaking approach to storytelling. "Episodes like 'Cause and Effect' were almost like an experimental film; there weren't a lot of TV shows at that time trying stuff like that. I think we did some real cutting-edge stuff, and I'm very proud of our work."

For his part, Piller had few doubts about what made *TNG* so extraordinary, "The vision we worked so hard to realize was what made *STAR TREK* special: the thematic approach to the material, and the moral and ethical dilemmas." As Gene Roddenberry always insisted, *STAR TREK: THE NEXT GENERATION* was more than simple entertainment – it was about ideas, and ultimately that was why it was so successful.

▲ The last scene of the show featured Picard joining his senior crew and friends in their regular poker game for the first time.



III The studio model of the *U.S.S. Pasteur* was built by Bill George, who based its design on some sketches drawn by Matt Jefferies.

The design and building of the *U.S.S. Pasteur* NCC-58925 studio model that was used in the filming of the episode 'All Good Things...' was almost unique in *STAR TREK* history. The makers of the show employed a policy that all model ships had to be commissioned and constructed by its own production team. However, with time pressing and no suitable model ready for filming, they found themselves in a predicament. Fortunately, Bill George came to the rescue.

Bill George is a visual effects supervisor who works at Industrial Light & Magic. At the time of filming 'All Good Things...' in 1994, George had already worked on four *STAR TREK* films, and was also a consummate modeler. Most notably, he helped design and build the *U.S.S. Excelsior* NX-2000 first seen in *STAR TREK III: THE SEARCH FOR SPOCK*. In other words, George's model building skills were impeccable, and when not building models for work, he liked to build them for fun.

This led George to construct a model at his home that was based on a concept Matt Jefferies had come up with while working on the design for the original *U.S.S. Enterprise* NCC-1701. It featured a starship with a huge spherical primary hull, a design which Jefferies seriously considered for the *Enterprise*, as he deemed the shape the best possible pressure vessel for use in a vacuum. Eventually Jefferies discarded this design direction

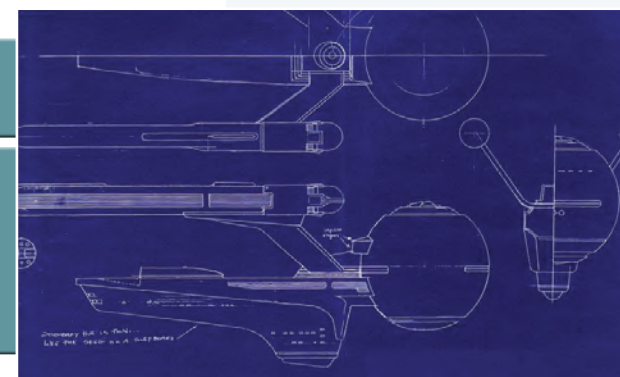
as "too bulky," but the unusual shape had always stayed with George.

In fact, it had made such an impression on George that he decided to build a starship based on this spherical design in his spare time. The model was made out of wood and styrene, George's modeling materials of choice, with customized neon tubes for internal lighting. Once it was built, George contacted the production team on *THE NEXT GENERATION* and asked them if they wanted to use it. At first, they were noncommittal, but they told him that they did need a starship that was contemporary of the *Enterprise-D*, but which still had a unique design.

This led George to submit blueprints of his design, and the producers ultimately decided to go with it. Initially, George had named the model the *U.S.S. Olympic*, but this was changed to the *U.S.S. Pasteur* – though its original name would be retained as its class designation. Virtually no other modifications were necessary before shooting the motion control photography of the studio model miniature at Image G.

Visual effects producer Dan Curry was delighted to use it, commenting, "Bill's model was perfect for the *Pasteur* because the spherical front would hold more beds than a sleeker shape like the *Enterprise*. It was a very stately, peaceful looking ship that was exactly what we needed."

THE STUDIO MODEL OF THE U.S.S. PASTEUR



▲ The makers of *TNG* decided to use Bill George's model after he showed them his blueprints of a ship with a spherical primary hull.

▲ The studio model of the *Pasteur* was built largely in Bill George's spare time and did not need many modifications before it was used for filming.

ON SCREEN



FIRST APPEARANCE: 'ALL GOOD THINGS...' (TNG)

TV APPEARANCE: STAR TREK: THE NEXT GENERATION

DESIGNED BY: Bill George

KEY APPEARANCE

STAR TREK: THE NEXT GENERATION 'All Good Things...'

A disoriented Captain Picard finds himself jumping back and forth between three timelines: to the past just before the *U.S.S. Enterprise* NCC-1701-D is sent on its first mission to Farpoint Station, the present, and 25 years in the future, where he has been diagnosed with Irumadic Syndrome, a degenerative brain disease.

At first Picard struggles to understand what is happening to him, but he soon becomes convinced that it is related to an unusual temporal anomaly that has appeared in the Romulan Neutral Zone.

As Picard makes his way to the location of the anomaly in all three timelines, he is visited by Q. The omnipotent troublemaker reveals that he is responsible for Picard's time traveling, and that the anomaly is related to the shifts. In addition, Q tells the captain that the trial of humanity from seven years earlier never ended and that it has been found guilty of being inferior. As punishment, humanity is to be wiped out -- not by the Q Continuum, but by Picard himself.

Now, Picard must discover how he will destroy humanity, and how, or if, he can stop the disaster from unfolding.

TRIVIA

In the alternate future timeline seen in 'All Good Things...', Picard became an ambassador before retiring to live in France. Meanwhile, Riker became an admiral, Data was a professor at Cambridge University, Worf was governor of a Klingon colony, Crusher was captain of the *Pasteur*, Troi had died, and La Forge was a writer who married Leah Brahms before having three children -- Bret, Alandra and Sydney.



The *U.S.S. Pasteur* was named in honor of Louis Pasteur (1822-1895), the renowned French chemist who founded the science of modern microbiology. He also invented the process known as pasteurization and developed several vaccines.



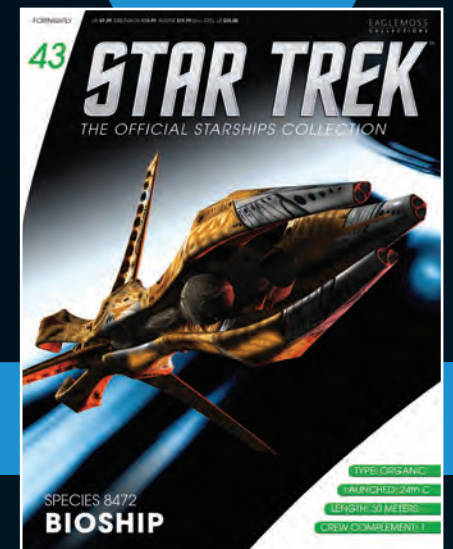
In early pre-production of 'All Good Things...', the *U.S.S. Pasteur* was referred to as a Hope-class vessel after the USS Hope (AH-7) World War II hospital ship. This name was at the suggestion of Don Beck, who produced promotional commercials for *STAR TREK: THE NEXT GENERATION*. It was later changed to an *Olympic*-class vessel because the model had already been built and named by Bill George.

COMING IN ISSUE 43

SPECIES 8472 BIOSHIP

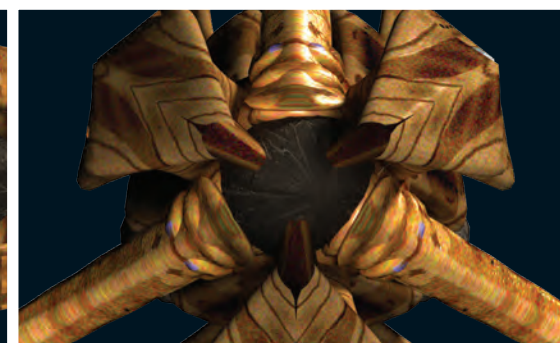
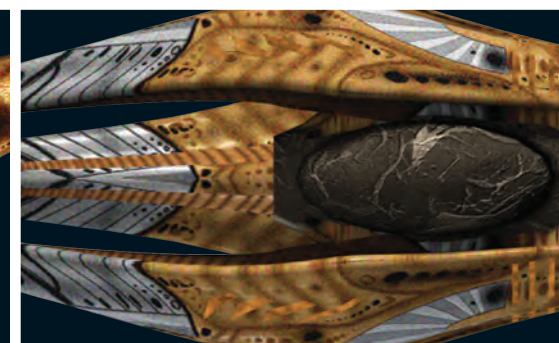
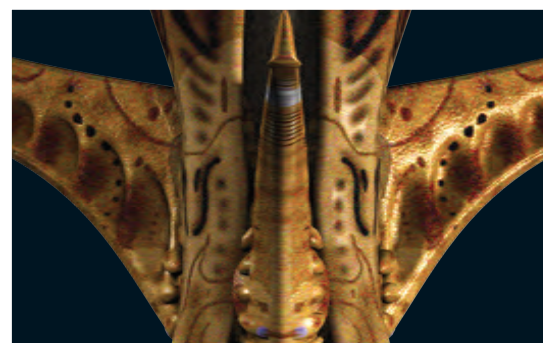


EVERY
TWO WEEKS
AT YOUR
RETAILER



Inside your magazine

- In-depth profile of the Species 8472s bioship, an organic vessel that could not only resist Borg ships, but destroy them
- How concept artist Steve Burg devised the look of the Species 8472s bioship



STAR TREK™

